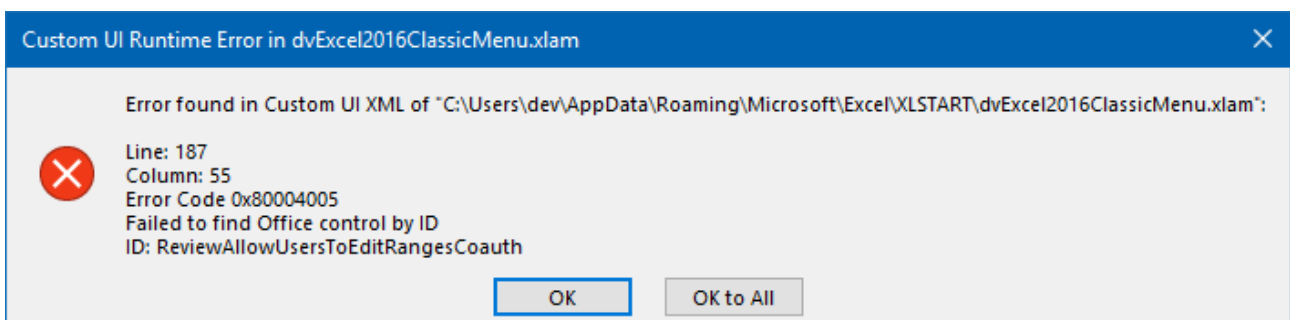


**Custom UI Runtime Error in
dvExcel2016ClassicMenu.xlam
dvPowerPoint2016ClassicMenu.ppam
dvWord2016ClassicMenu.dotm**

If Excel, Word, or PowerPoint are displaying an error message at start-up in regards to OfficeClassicMenu (similar to the example below), you are most likely either using an old version of OfficeClassicMenu or you are using an old version of Office with a new version of OfficeClassicMenu.



Example of an error message. The relevant information is in the window title. The actual message can vary.

Title of the error window in Excel

Custom UI Runtime Error in dvExcel2016ClassicMenu.xlam

Title of the error window in PowerPoint

Custom UI Runtime Error in dvPowerPoint2016ClassicMenu.ppam

Title of the error window in Word

Custom UI Runtime Error in dvWord2016ClassicMenu.dotm

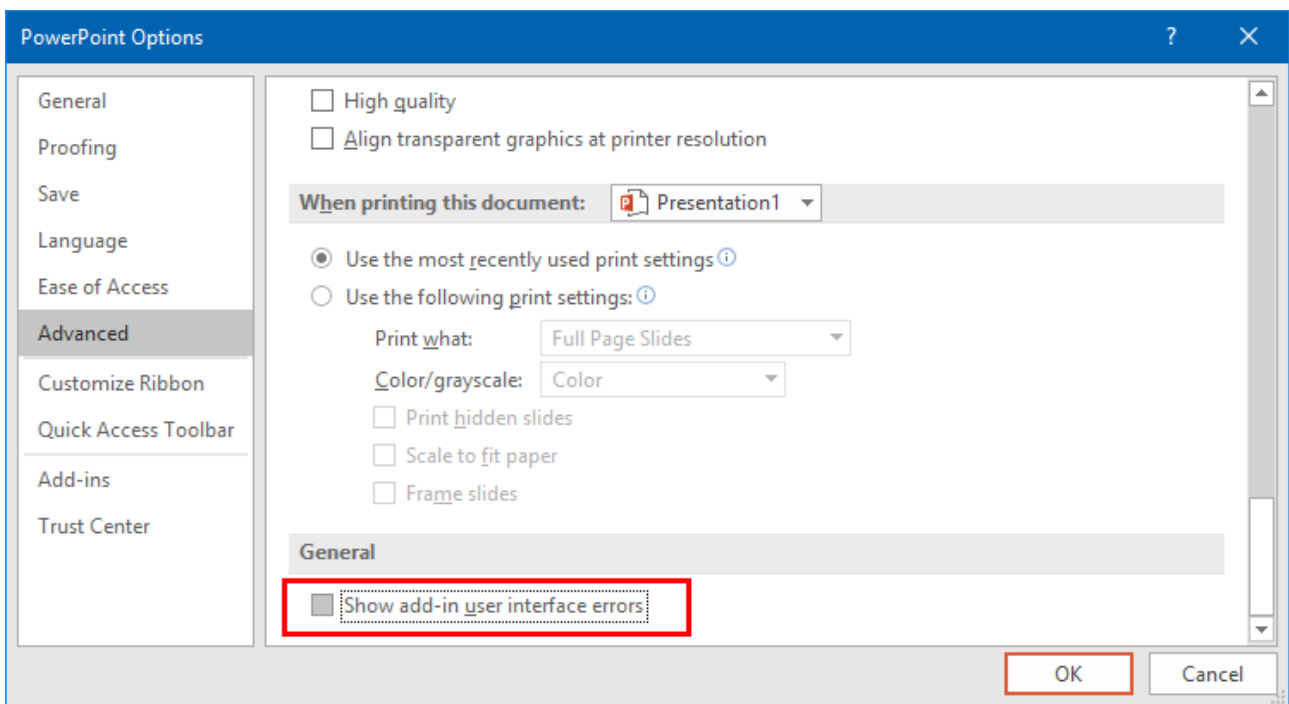
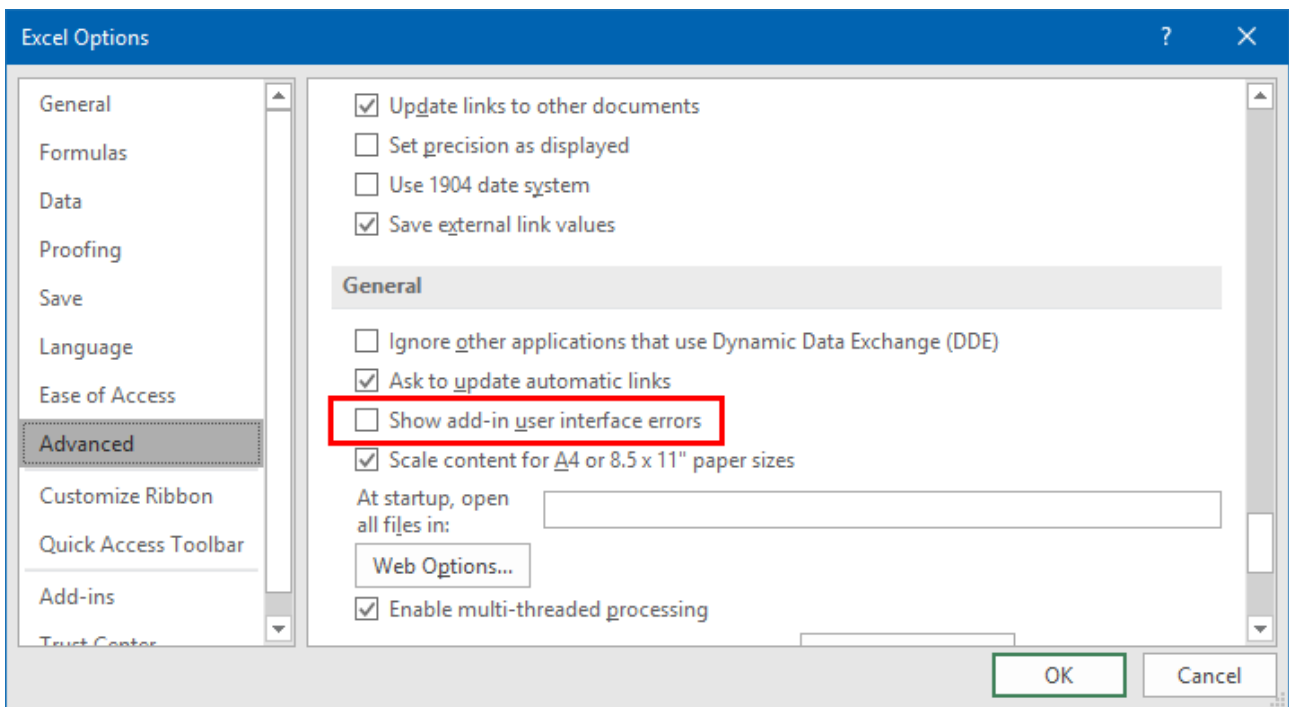
What causes this error?

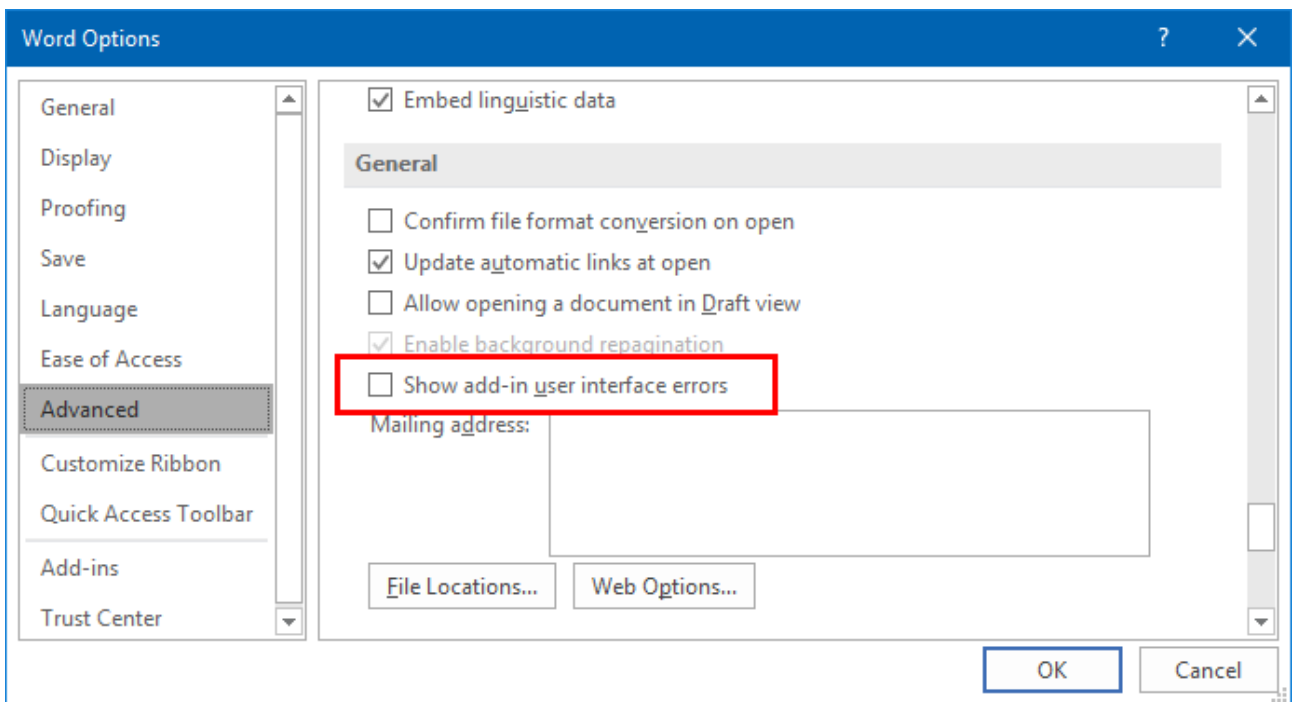
Microsoft is constantly enhancing and improving Office 2016 and releases updates every couple of months. OfficeClassicMenu is usually not affected by these changes. However, it happened occasionally that Microsoft removed functionality which caused dependent functionality in OfficeClassicMenu to break. The corresponding button will be hidden and the error message above appears, depending on your Office settings. Fortunately, OfficeClassicMenu will still work properly apart from the removed functionality and the error message.

Solution 1

Click on **File / Options**

Select group **Advanced** from the left on the left. Then scroll down to section **General** on the right and **uncheck** option **"Show add-in user interface errors"**.





Solution 2

If you are using an old version of OfficeClassicMenu, download and install the latest version of the add-in.